

EcoFlow Power Kits

SOLAR / PORTAL POWER MADE EASY



2-15kW Lithium Iron
Phosphate Power Kits
Australian Distributor





EcoFlow Power Kits

SOLAR / PORTAL POWER MADE EASY

CARAVANS
MOTORHOMES
HOMES
REMOTE OR OFFGRID



Fast & Multiple Charging

Multiple charging methods for up to 15kWh of stored energy. Get up to 4800W of solar input, use your alternator or wind turbine, plug in shore power, or even use an EcoFlow Smart Generator to replenish power anytime, anywhere.

- Always In Charge
- No More Power Anxiety
- Multiple Charging Options
- Solar First
- Up To 6000W Max Charging Power

Integration & Compact

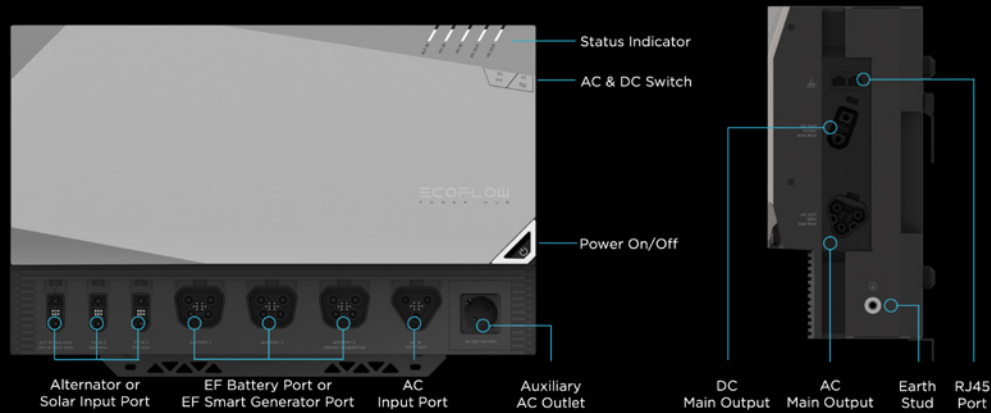
The Power Hub combines two MPPT solar charge controllers, one battery charger with MPPT, one DC-DC step-down converter, and an inverter-charger. That's far less components and wiring required.

- All In One
- Minimal Design
- Easy Operation
- Simple Connection
- Powerful as Shore Power
- Done Cable Management





Power Hub Overview



Power Hub Specs

- DC Main Output: 13.6V 70A or 26.4V 60A
- AC Main Output: 220V-240V 50Hz or 60Hz, 3600W (7200W Peak) (3000W @ Battery Voltage < 50V)
- Auxiliary AC Outlet: 220V-240V 10A
- Total Input Power: Max 6000W
- AC Input Power: 220V-240V Max.15A, Max. 3000W
- Alternator Input Power
- Port 1: 13V-60V 60A, Max. 1600W
- Port 2 & 3: 13-60V 30A, Max. 1600W
- Solar Input Power
- Port 1 & 2 & 3: 15V-60V 30A, Max. 1600W
- Dimension (HWD): 30 cm X 48 cm X 14 cm
- Operating Temperature: -25°C to 60°C
- Net Weight: 14 Kg
- CE, UL, FCC, UKCA, E-Mark, RCM, TELEC, KCC, ICES, EMC Class A
- Warranty: 5 Years



Monitor & Control

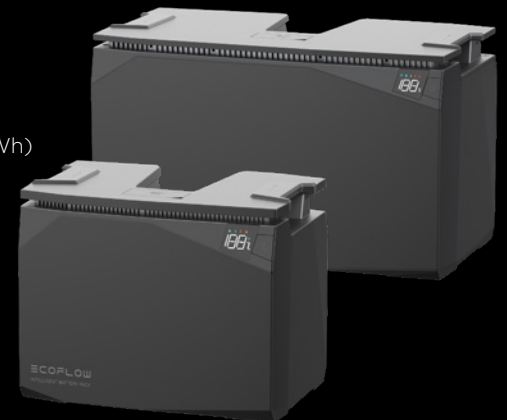
Use the EcoFlow Power Kit Console to have a complete overview of your power consumption, or have wireless control of your system from a distance with the EcoFlow App.

- Intuitive Interface
- Mastery From Afar
- Read Every Load
- Optimize Energy Usage
- Configure Entire System
- Review Consumption History
- Track Your Carbon Footprint



2kWh & 5kWh LFP Battery

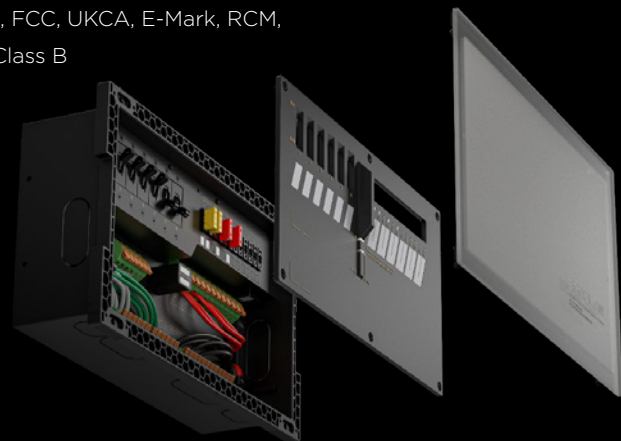
- Chemistry: Lithium Iron Phosphate
- Capacity: 51.2V, 40Ah (2kWh) & 100Ah (5kWh)
- 3000 (2kWh) & 3500 (5kWh) Cycles @ 80% DOD
- Built-in BMS and LCD Status Indicator
- Auto-Heating for Cold Environment Operation
- Built-in 100A (2kWh) & 125A (5kWh) Fuse
- Advanced Battery Safety Protections
- Dimension (HWD): 28.5cm x 34.8cm x 19.8cm (2kWh) 30cm x 50cm x 26cm (5kWh)
- Operating Temperature: -20°C to 50°C
- Net Weight: 17.1 Kg (2kWh) & 40.6 Kg (5kWh)
- CE, UL, FCC, UKCA, E-Mark, RCM, TELEC, KCC, ICES, UN38.3, IP54, EMC Class B
- **Warranty: 5 Years**





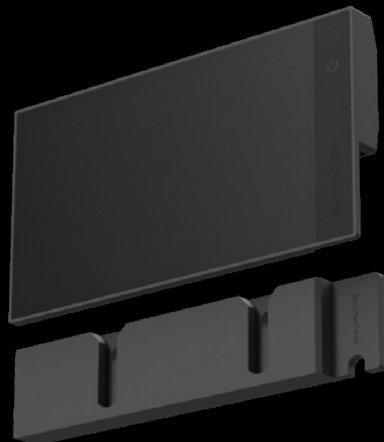
AC/DC Smart Distribution Panel

- DC Main Input: 10-30V, Max. 70A
- AC Main Input: : 220V-240V, Max. 30A
- DC Output: 6 x Controllable Circuits + 6 Regular Circuits, 10-30V, Max. 20A Each Circuit
- AC Output: 6 x Circuits (1/2: 20A, 3/4/5/6: 10A), 240V
- Capture Real-Time Load Data for Each AC & DC Circuit for Smart Load Management
- Dimensions (HWD): 21 cm X 35.4 cm X 9.8 cm
- Operating Temperature: -25°C to 60°C
- Net Weight: 2.6Kg
- Certificate & Standard: CE, UL, FCC, UKCA, E-Mark, RCM,
- TELEC, KCC, ICES, ip21, EMC Class B
- **Warranty: 5 Years**



Power Kit Console

- Screen: 7-Inch (Diagonal) IPS Touch Screen
- Communication: RJ45 CAN
- Mounting Bracket Included
- Simple Control & Display
- Control Power Kits System ON/OFF via the Console's Power Switch
- Dimension (HWD): 11.3 cm X 20.5 cm X 2.2 cm
- Operating Temperature: -25°C to 50°C
- Net Weight: 0.45 Kg
- Certificate & Standard: CE, UL,FCC, UKCA, E-Mark, RCM,
- TELEC, KCC, ICES, and EMC Class B
- **Warranty: 5 Years**



HOW TO PURCHASE?

For all enquiries please contact

Glen Hood

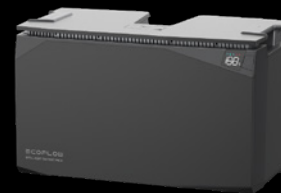
National Sales Manager

M 0416 029 888

E glen@ecopowerworld.com.au



EcoFlow
2kWh LFP Battery



EcoFlow
5kWh LFP Battery



EcoFlow
Full Independent Kit

EcoFlow Power Kits

SOLAR / PORTAL POWER MADE EASY

CARAVANS
MOTORHOMES
HOMES
REMOTE OR OFFGRID



Australian Distributor

 **ecopower**
world